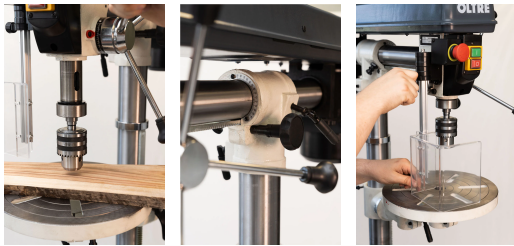


## 860MM (34") RADIAL FLOOR MOUNT DRILL PRESS RDP86016F BY OLTRE



The beauty of Radial Drill Presses is the variety of angles that can be set for otherwise difficult boring operations. These specialised machines function like normal drill presses that bore in a vertical plane, but the unique rotating head and motor upper assembly also allows the head to turn laterally, left and right for angles too! This is ideal for boring projects that lie on the table or are too large to do so. Situations that cabinetmakers, farmers, and model makers frequently get into. In addition to the adjustable head, the work tables can also be tilted and locked in position for boring holes at a set angle. Adjustable depth stop guarantee that multiple holes will all be drilled at exactly the same depth. Multi-step pulleys that let you change drilling speeds just by repositioning the drive belts. Large handles make table and head adjustments easy. The Radial Floor Mount Drill Press has the same great features as the bench model but has larger components in proportion with the added height and capacities of this floor model - large base, column, and table assemblies. The work table on this model is the round shape and will turn 360° as well as tilt 45° left and right.

### Features

Induction Motors provide plenty of power for drilling  
Head & Motor assembly tilt left and right for special angle drilling

SKU	Option	Part #	Price
9700091		RDO86016F	\$789

<b>Model</b>	
Type	Drill Press
SKU	9700091
Part Number	RDO86016F
Brand	Oltre
Size	860mm (34")
Configuration	Floor Mount (Pedestal)
<b>Technical - Main</b>	
Power Source	240V 50Hz Single Phase
Motor Power (Input)	0.5HP / 370W
Table Size	300mm
Drilling Capacity	16 mm
Chuck Capacity	16 mm
Speed Range	440-2200
<b>Technical - Spindle Moulder</b>	
Chuck Capacity	16 mm
<b>Dimensions</b>	
Product Height	1630 mm
Product Weight (Net Weight)	58 kg
<b>Country of Origin</b>	
Manufactured in	China
<b>Features</b>	
Rack & Pinion	✓
Easy Speed Change Device with Speed Adjust Handle	✓
<b>Safety</b>	
Emergency Stop Switch	✓
Chuck Guard	✓
NVR (No Volt Release) Switch	✓
<b>Packaging + Shipping</b>	
Shipping Length	1400 mm
Shipping Width	500 mm
Shipping Height	250 mm
Shipping Weight (Gross)	62.0 kg
Shipping Notes	This product is classified as 'Heavy / Oversized' and generally does not qualify for FREE SHIPPING.



**23 Exhibition Drive, Malaga Western Australia**

Monday - Friday 7am-5pm + Sat 8am-4pm

**Sales Centre** for Sales, Advice + Orders

T +61 8 9209 7400

[hello@beyondtools.com](mailto:hello@beyondtools.com)



Stepped Pulleys give multiple spindle speed choices  
Keyed chucks hold drill bits and accessories tight  
Adjustable depth stops are great for repeatable drilling  
Cast iron head with spindle assembly operates precisely and smoothly  
3 Feed handles provide excellent control when drilling  
Heavy Cast Iron bases have slots for attaching jigs or fixtures  
Machined, cast iron table with slots for attaching clamps, vices, etc.  
Rack & pinion design makes adjusting table and head assembly easy  
Tables tilt and move up or down along the column for best working positioning  
Thick metal columns give strong, rigid support  
Front on/off toggle switches have removable safety tabs for extra security