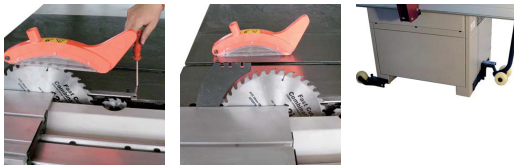


315MM (12") 4HP 2.6M SLIDING TABLE PANEL SAW 240V OT-PS-1226A BY OLTRE



SKU	Option	Part #	Price
9504838		OT-PS-1226A	\$5995

Model	
Type	Panel Saw
SKU	9504838
Part Number	OT-PS-1226A
Brand	Oltre
Technical - Main	
Power Source	240V 50Hz Single Phase
Motor Power (Input)	4HP / 3000W
Cutting Capacity - Height	100 mm
Technical - Saw	
Sliding Table (Cross Cut) Size	2600mm
Blade (Main) - Bore Size (mm)	30mm
Blade (Main) - Diameter (Max.)	254 mm
Blade (Main) - Speed	4000RPM
Blade (Scoring) - Diameter (Max.)	90 mm
Blade (Scoring) - Bore Size	20 mm
Blade (Scoring) - Speed	7500RPM
Blade Tilt	90° to 45°
Country of Origin	
Manufactured in	China
Workshop (Site) Info	
Electrical Connection	Lead & Plug
Packaging + Shipping	
Shipping Length	1220 mm
Shipping Width	765 mm
Shipping Height	1040 mm
Shipping Weight (Gross)	290.0 kg
Shipping Notes	This product exceeds hand unloading limits and requires a tail lift truck or forklift at the unloading location (Receivers end).

Specifications:

Major Table Size: 380 x 800mm

Extension Table, Cast Iron: 440 x 800mm

Extension Table, Steel Plate: 440 x 800mm

Rear Extension Table: 310 x 500mm

Sliding Panel Size: 2600 x 270mm

Cross Cut Table Size: 680 x 580mm

Cross Cut Fence: 1200 - 2200mm

Maximum Cut Depth: 100mm at 90 ° / 80mm at 45 °

Maximum Distance, Blade to Rip Fence: 1220mm

Maximum Cross Cut Length: 2600mm

Maximum Cross Cut Width: 1350mm

Optional Accessories:

Saw Blades

100mm Dust Hose

Hose Clamps + fittings etc

Dust Extractor FM Series Dust Collector

Optional Mobility Wheel Kit (MW-1)

Warranty:-

Full 12Month Manufacturer's Warranty

Assembly:-

\$750 for assembly + delivery (Metro WA)

Please contact us for other assembly options available

throughout Australasia