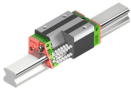
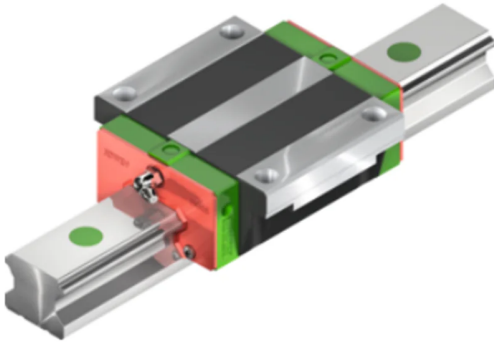


SHOP-SOILED LINEAR GUIDEWAY BLOCK SUIT CNC HGW25CCZ0H BY HIWIN



SKU	Option	Part #	Price
9501537		HGW25CCZ0H	\$175

Model	
SKU	9501537
Part Number	HGW25CCZ0H
Brand	Hiwin
Packaging + Shipping	
Shipping Weight (Gross)	1.48 kg

Shop-Soiled - New Old Stock A linear guideway makes it possible to move in a linear motion with rolling elements. The use of balls and rolls between the rail and block in a linear guideway makes precise linear movements possible.

Static load rating C0

If a linear guideway system is subjected to excessive loads or impacts during movement or at a standstill, localised permanent deformation occurs between the track and balls.

As soon as this permanent deformation exceeds a certain level, it affects smooth operation of the guideway. According to its basic definition, the static load rating corresponds to a static load that causes permanent deformation of 0.0001 Å —ball diameter at the contact point that is loaded the most.

The values are given in the tables for each linear guideway system. Using these tables, the designer can select a suitable linear guideway system. The maximum static load to which a linear guideway system is subjected must not exceed the static load rating.

Permissible static moment M0

The permissible static moment is the moment which, in a defined direction and size, corresponds to the maximum possible load on the moving parts by the basic static load rating. The permissible static moment is defined for linear motion systems for three directions: MX, MY and MZ.

Solid steel block SE



23 Exhibition Drive, Malaga Western Australia

Monday - Friday 7am-5pm + Sat 8am-4pm

Sales Centre for Sales, Advice + Orders

T +61 8 9209 7400

hello@beyondtools.com

For continuous operation at temperatures above 80? °C, solid steel blocks with steel deflection systems are used. The standard end seals are replaced by heat-resistant end seals and the plastic cover caps of the profile rail by brass cover caps.

HIWIN coating HICOAT CZS

HICOAT CZS is a very thin zinc coating that offers a very good corrosion protection, even on radii and chamfers. Smaller bare parts stay protected by the cathodic corrosion protection. Compared with uncoated pieces this leads to significantly higher periods of use. The CZS coating is available for the HG, EG and CG series. Further information can be found in the catalogue "Linear Guideways" under chapter "HIWIN coatings for linear guideways".

HIWIN coating HICOAT CTS

HICOAT CTS is a thin layer chrome coating that offers good corrosion protection and a very high wear protection. The high wear protection results from the extraordinary hardness of the coating. The CTS coating is free of Cr(VI) and suitable for use in food stuffs. It is available for the HG, EG, CG and WE series. Further information can be found in the catalogue "Linear Guideways" under chapter "HIWIN coatings for linear guideways".

Lubrication