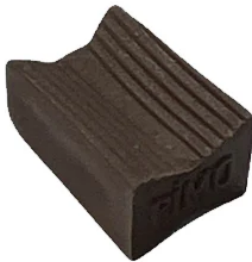


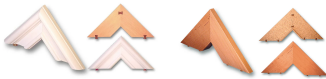
W2 (8MM X 10MM) X 14MM BROWN HOFFMANN STYLE DOVETAIL KEYS W9202500 (1000PCE) BY DELTAAKS PIMO FEN-IS



| SKU | Option | Part # | Price |
|---------|--------|-----------|-------|
| 9000604 | | 2034-2 DK | \$95 |

| | |
|-----------------------------|-------------------------------------|
| Model | |
| Type | Dovetail Keys |
| SKU | 9000604 |
| Part Number | 2034-2 DK |
| Barcode | 09000604 |
| Brand | Fen-Is |
| Size | W2 - 10mm (3/8") W x 8mm (2-3/8") H |
| Technical - Main | |
| Colour Name | Brown |
| Material | Proprietary Plastic Compound |
| Dimensions | |
| Product Length | 14 mm |
| Product Width | 10 mm |
| Product Height | 8 mm |
| Country of Origin | |
| Manufactured in | Turkey |
| Packaging + Shipping | |
| Shipping Weight (Gross) | 0.85 kg |
| Quantity Per Pack | 1000 |

W2



Suits:-

1-1/8" (28.5mm) and thicker stock

The Hoffmann style Dovetail Joining System is used in woodworking, furniture manufacturing, window and door production, architectural millwork designs, store fixtures, custom and production picture framing shops, pre-fab housing and much more, in shops and plants around the globe. To best suit an ever expanding range of joining application, a total of five different Hoffmann Dovetail Keys and corresponding Dovetail Router Bit sizes are offered, designated as W-0, W-1, W-2, W-3 and W-4. The 'W' designations refer to the cross-sections of the Keys (the size of the "bowtie"), and Keys in each size are available in a variety of different lengths. The cross-section dimensions of W-2 Hoffmann Dovetail Keys are approx. 3/8" wide and 5/16" tall (10mm by 8mm). W-2 Dovetail Keys are available in lengths from 1/4" up to 2 3/8" (6.0mm to 60mm) - see chart below. Hoffmann Dovetail Keys, size W-2, are our most versatile size for a wide range of woodworking applications including miter joints, butt joints, compound miter joints and end-to-end joints. Typical uses include mitered cabinet door joints and furniture construction, custom woodworking, door trim and casing, wooden toys, face frames (beaded and plain), cabinet crown moulding, casket lids and casket side panel joinery, synthetic and wooden plantation shutter frames, clocks and display cases, shadow boxes, picture and



23 Exhibition Drive, Malaga Western Australia

Monday - Friday 7am-5pm + Sat 8am-4pm

Sales Centre for Sales, Advice + Orders

T +61 8 9209 7400

hello@beyondtools.com



mirror frames, applied wall and door molding and mitered base frames, etc. Hoffmann W-2 Dovetail Keys are available in standard brown as well as white and black plastic in limited lengths. W2-5/8" and W2-7/8" plastic Dovetail Keys are offered in our so called 'wood-match" colors in LIGHT MAPLE, MAPLE, CHERRY, WALNUT and DARK WALNUT for applications where the Keys are visible in the finished products (mitered cabinet doors, furniture, displays, etc.). Due to the popularity of this size, all new Hoffmann machines are factory-equipped with W-2 router bits. Applications:-

mitered doors with heavy glass or mirror panels

floor-to-ceiling type doors for laboratories and schools are often joined with W-3 Dovetail Keys as well.

W-2 Dovetail Keys are available in lengths from 1/4" up to 2 3/8" (6.0mm to 60mm) - see chart below. Hoffmann Dovetail Keys, size W-2, are our most versatile size for a wide range of woodworking applications including miter joints, butt joints, compound miter joints and end-to-end joints. Typical uses include mitered cabinet door joints and furniture construction, custom woodworking, door trim and casing, wooden toys, face frames (beaded and plain), cabinet crown moulding, casket lids and casket side panel joinery, synthetic and wooden plantation shutter frames, clocks and display cases, shadow boxes, picture and mirror frames, applied wall and door molding and mitered base frames, etc. Hoffmann W-2 Dovetail Keys are available in standard brown as well as white and black plastic in limited lengths. W2-5/8" and W2-7/8" plastic Dovetail Keys are offered in our so called 'wood-match" colors in LIGHT MAPLE, MAPLE, CHERRY, WALNUT and DARK WALNUT for applications where the Keys are visible in the finished products (mitered cabinet doors, furniture, displays, etc.). Due to the popularity of this size, all new Hoffmann machines are factory-equipped with W-2 router bits.