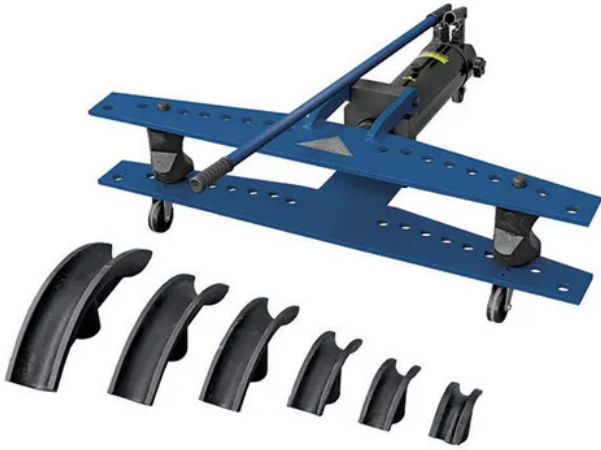


## 1/2" TO 2" HYDRAULIC PIPE BENDER TM811-13050 BY ITM



SKU	Option	Part #	Price
87432325		TM811-13050	\$599

Model	
Type	Hydraulic Pipe Bender
SKU	87432325
Part Number	TM811-13050
Barcode	9328042030566
Brand	ITM
Size	1/2" to 2"
Dimensions	
Product Weight (Net Weight)	1 kg
Packaging + Shipping	
Shipping Weight (Gross)	1.48 kg

### Features

- Capable of bending angles from 0° to 90°
- Cold bending, no pre-warming of pipe is required
- Heavy duty castors
- Flip over top frame to easily remove bent pipe
- 2 stage heavy duty hydraulic pumping system
- Longer piston stroke per pump and optimized hand force minimises operator fatigue
- Supplied in wooden case

### Specifications

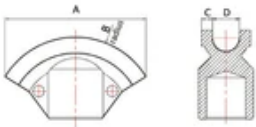
- Suitable for Carbon Steel and Wrought Iron Pipe
- Ø1/2" - Ø2" NB pipe capacity
- 1/2", 3/4", 1", 1-1/4", 1-1/2", 2" cast steel formers
- 0° to 90° Bending angle
- 13,000kg Force capacity
- 250mm Stroke

### Description

**Pipe Benders**

**Bending Shoes**

For bending pipes to 90° following GB/T 3091, DIN 2440, EN 10255  
Made of nodular cast iron, the bending shoes are strong and dur.



Bending shoe size (inch)	A (mm)	B (mm)	Minimum bend radius (mm)	C (mm)	D (mm)	Pipe Schedule	Wall thickness (mm)
1/2"	115	67.5	50.2	9	22	40	2.8
						80	3.7
3/4"	131	84.5	66	8.5	28	40	2.9
						80	3.9
1"	147	96.5	75.4	9	34	40	3.4
						80	4.5
1 1/2"	195	134	108.7	8.3	43	40	3.6
1 1/2"	242	162	133.5	10.5	50	40	3.7
2"	297	238	199.2	11	62	40	3.9
2 1/2"	380	257	209	13	79	40	5.2
3"	436	390	335	14	90	40	5.5
4"	555	450	400	12	110	40	6

\* Pipe schedule - 40 = Standard, 80= Extra Heavy