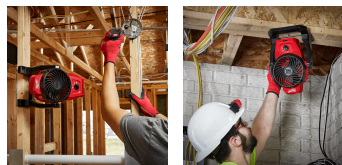


## 12V MOUNTING FAN BARE (TOOL ONLY) M12AF-0 BY MILWAUKEE



SKU	Option	Part #	Price
8730469		M12AF-0	\$159

Model	
Type	Fans
SKU	8730469
Part Number	M12AF-0
Barcode	4892210214515
Brand	Milwaukee
Dimensions	
Product Length	224.8 mm
Product Width	183.6 mm
Product Height	332.7 mm
Warranty	
Warranty	1 Year
Packaging + Shipping	
Shipping Weight (Gross)	2.1 kg



The M12™ Mounting Fan delivers up to 23 Km/h air speed anywhere on the jobsite, providing a maximum air volume of 680m<sup>3</sup>/h. The 152mm blade propels air at a fast rate, allowing for quick efficient cooling, drying and ventilation. The M12™ Mounting Fan is compact and its design allows for users to mount it in various locations around the jobsite. The M12™ Mounting Fan features powerful magnets, a 50 mm spring-loaded clamp, several keyholes and pass-through holes to deliver air movement wherever needed. Through its 360-degree head rotation, the M12™ Mounting Fan provides maximum directional airflow. This cordless fan offers three-speed settings - high, medium, and low, providing optimal air speed control. With up to 16 hours of run time on a M12™ 6.0 Ah battery pack, the M12™ Mounting Fan provides maximum runtime, keeping the jobsite cool when required.

**Features:**

Up to 16 hours runtime when used with M12™ 6.0AH

REDLITHIUM™ -ION Battery

Up to 23 km/h air speed and 11.3 m<sup>3</sup>/min air volume provides excellent air flow and cooling

Full 360° head rotation for use on all angles

Compact 152.4 mm (6") blade diameter allows for use in tight spaces

Spring loaded clamp on base for fixing fan securely to surfaces

Integrated magnets allows fan to be mounted to vertical metal surface

**Specifications:**



**23 Exhibition Drive, Malaga Western Australia**

Monday - Friday 7am-5pm + Sat 8am-4pm

**Sales Centre** for Sales, Advice + Orders

T +61 8 9209 7400

[hello@beyondtools.com](mailto:hello@beyondtools.com)

Voltage: 12V

Runtime: 4 Hours (High) | 8 Hours (Medium) | 16 Hours (Low)

- M12B6

Maximum Air Speed: 23 km/h

Maximum Air Volume: 11.3 m<sup>3</sup>/min

Blade Diameter: 152.4mm

**Resources:**

General Power Tool Safety Warning

Operator's Manual (M12AF-0)