



23 Exhibition Drive, Malaga Western Australia

Monday - Friday 7am-5pm + Sat 8am-4pm

Sales Centre for Sales, Advice + Orders

T +61 8 9209 7400

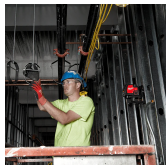
[hello@beyondtools.com](mailto:hello@beyondtools.com)

## 360° LASER BRACKET WITH QUICK CONNECT 48351311 BY MILWAUKEE



SKU	Option	Part #	Price
8728916		48351311	\$123.8

Model	
Type	Laser Bracket with Quick Connect
SKU	8728916
Part Number	48351311
Barcode	045242568444
Brand	Milwaukee
Packaging + Shipping	
Shipping Weight (Gross)	1.48 kg



The 360 ° Laser Bracket with Quick Connect is an adaptable laser attachment that contributes to fast laser setup. With the multi-plane rotational adjustment, users can easily mount the laser on flat, horizontal, or vertical materials. The amplified rare earth magnets provide a strong hold onto metal surfaces. The strong magnets combined with integrated screw and nail hang holes make setup easy and efficient in any environment. The 360 ° laser bracket mount also features a precision vertical adjustment which makes aligning horizontal lines much faster. The bottom has 1/4-20" threading that easily attaches to most tripods. The MILWAUKEE ® 360 ° Laser Bracket with Quick Connect is compatible with all Milwaukee Cross Line & Plane Lasers.

### Features:-

- Multi-plane rotational adjustment
- Maximum strength amplified rare earth magnets
- Adjustment lock
- Non-marring rubber pads
- Micro control: precise vertical alignment
- 1/4-20 & 5/8 - 11 thread mount
- Integrated screw and nail hang hole
- Compatible with Milwaukee ® Cross Line and Plane lasers