



23 Exhibition Drive, Malaga Western Australia

Monday - Friday 7am-5pm + Sat 8am-4pm

Sales Centre for Sales, Advice + Orders

T +61 8 9209 7400

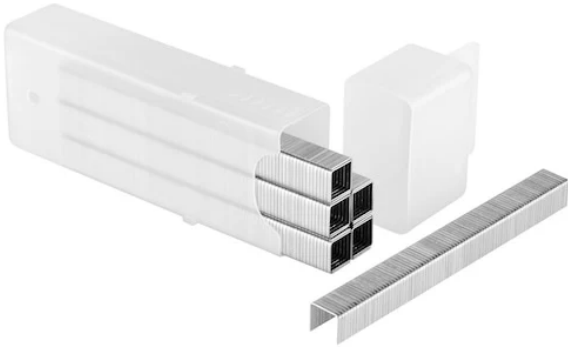
hello@beyondtools.com

HEAVY DUTY NARROW CROWN STAPLES (BOX OF 1,000) BY STANLEY



SKU	Option	Part #	Price
8700773	Size: 10mm (3/8")	TRA706T	\$6.9
8705674	Size: 12mm (1/2")	TRA708T	\$7
8705644	Size: 14mm (9/16")	TRA709T	\$8.5

Model	
Type	Narrow Crown Staples
SKU	8700773
Part Number	TRA706T
Barcode	076174054286
Brand	Stanley
Technical - Main	
Material	Galvanised Steel
Price Vs Quality	
Quality	Commercial (Suitable for Professional / Trade Use)
Packaging + Shipping	
Shipping Weight (Gross)	0.48 kg
Packaging Box Qty	1000



Heavy-duty narrow crown staples are convenient and reliable. Used for heavy-duty stapling jobs such as insulation carpet underlayment, and roofing felt, these staples come in sturdy plastic packaging to help reduce breakage of the stick. With color-coded packaging, you can easily choose the correct brads for the project you are working on.

Features

For heavy duty stapling jobs such as insulation, carpet under laying and roofing felt

Colour-coded packaging makes size and product selection a cinch

Sturdy plastic packaging reduces staple breakage

Suit

TR100, TR200, TRE500 series, PHT150, PHT250 and Arrow® T-50

Specification

Crown Width: 11.4mm (Narrow Crown)