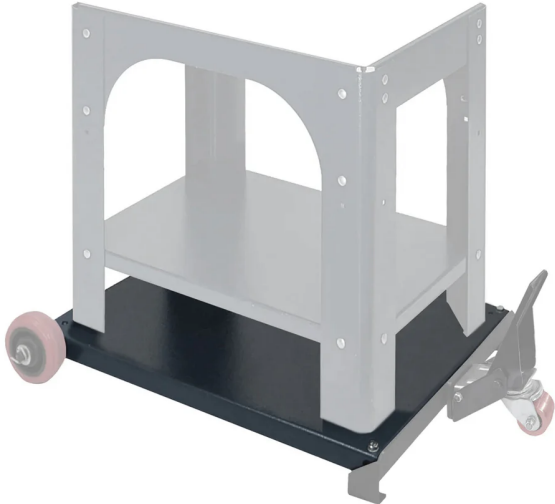


**MOBILITY WHEEL KIT WITH FOOT BRAKE BS350C-MWK SUIT BS350C / BS350D BANDSAW BY WOODFAST**



Shown with optional BS350C-MBP (Mobility Base Plate) + BS350C-MWK (Mobility Wheel Kit)



SKU	Option	Part #	Price
8001661		BS350C- MWK	\$169.95

Model	
Type	Bandsaw Mobility Kit / Mobile Base
SKU	8001661
Part Number	BS350C- MWK
Barcode	735745530795
Brand	Woodfast
Dimensions	
Product Weight (Net Weight)	10 kg
Country of Origin	
Manufactured in	China
Packaging + Shipping	
Shipping Length	448 mm
Shipping Width	100 mm
Shipping Height	628 mm
Shipping Weight (Gross)	12.0 kg

Transform your Bandsaw into a highly versatile and mobile tool with the Mobility Kit Wheel Kit BS350C-MWK. Made specifically to fit BS350C and BS350D Bandsaws by Woodfast, this kit allows you to easily move your saw around your workshop, increasing efficiency and productivity. With this kit, you'll have the flexibility to work on various projects without having to constantly set up and dismantle your Bandsaw. Take advantage of this expert-designed kit and streamline your woodworking process.

**Important Note**

For BS350C Model Bandsaws - This Kit must be used in conjunction with Woodfast Mobility Base Plate BS350C-MBP  
 For BS350D Model Bandsaws - The Woodfast Mobility Base Plate BS350C-MBP is not required

**Suits**

- BS350C Bandsaw by Woodfast
- BS350d Bandsaw by Woodfast
- 10-324TG Bandsaw by Rikon
- Similar approved equipment by various other brands