



23 Exhibition Drive, Malaga Western Australia

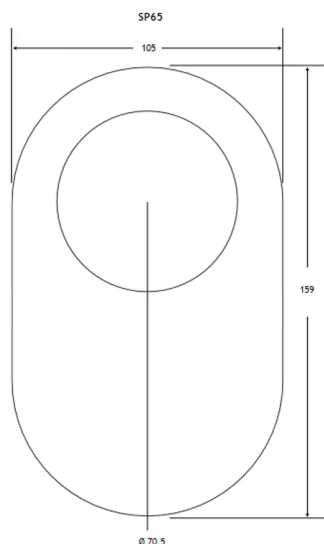
Monday - Friday 7am-5pm + Sat 8am-4pm

Sales Centre for Sales, Advice + Orders

T +61 8 9209 7400

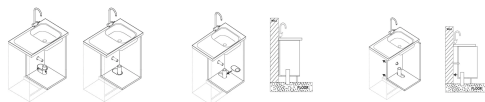
hello@beyondtools.com

SELF ADHESIVE PLASTIC COVER PLATE WITH 71MM HOLE TO SUIT 65MM DMV WASTE ACCESS SP65 BY CORNA



SKU	Option	Part #	Price
42359		SP65	\$2.6

Model	
Type	Cabinetry Access Panel Cover Plate
SKU	42359
Part Number	SP65
Barcode	42359
Brand	Corna
Packaging + Shipping	
Shipping Weight (Gross)	0.0 kg



Pipe Flange Plastic Cover Plates. **Features:-**

Tidy holes for a variety of plumbing penetrations.

The blank flanges tidy large holes cut for power plugs and hose fittings etc.

Use it for general patchwork, packers or make up your own cover plates for small pipe or cable penetrations

1mm thick self-adhesive white gloss polystyrene material

A fast solution to cover the holes made by plumbing, electrical and gas fitters during the installation of cabinet work

Self adhesive with peel off backing to enable fast installation

Also available in pre-made shapes and sizes – select from this range **Cover Plates**

or Cover Plates to suit Waste

The plastic cover plates are available in various sizes

to suit the following penetrations:- Plastic Cover Plates

to Suit Pressure Pipe:-

HP15 – 21mm Hole to suit 15mm Pressure Pipe

HP20 – 28mm Hole to suit 20mm Pressure Pipe

HP25 – 34mm Hole to suit 25mm Pressure Pipe

HP32 – 42mm Hole to suit 32mm Pressure Pipe

HP40 – 48mm Hole to suit 40mm Pressure Pipe

HP50 – 60.5mm Hole to suit 50mm Pressure Pipe

Plastic Cover Plates – Blank Flanges:-

BF60 – 56mm dia.

BF70 – 69mm dia.



23 Exhibition Drive, Malaga Western Australia

Monday - Friday 7am-5pm + Sat 8am-4pm

Sales Centre for Sales, Advice + Orders

T +61 8 9209 7400

hello@beyondtools.com

BS300 - Blank Sheet 297x210mm

Plastic Cover Plates to Suit Wall Outlet Flanges:-

WF70 - 22.5mm Hole to suit 12.7mm 1/2" BSP Wall Outlet

Flange

Plastic Cover Plates to Suit Copper Pipe Flanges:-

CP15 - 14.7mm Hole to suit 12.7mm 1/2" Copper Pipe

CP20 - 20mm Hole to suit 19mm 3/4" Copper Pipe

Plastic Cover Plates to Suit Waste Access Pipes:-

SP40 - 46mm Hole to suit 40mm DWV Waste Pipes

SP50 - 57mm Hole to suit 50mm DWV Waste Pipes

SP65 - 71mm Hole to suit 65mm DWV Waste Pipes